



# MERAJ

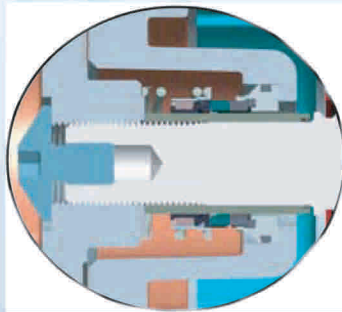
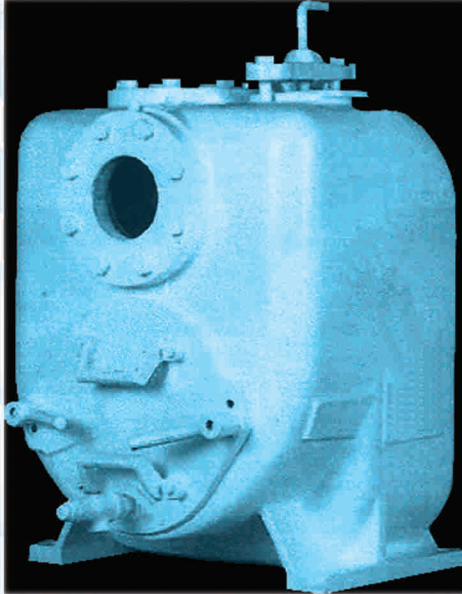
**Self-Priming, Centrifugal Pumps**  
 Chemical, Petroleum, Water & Fire Fighting

**MODEL: MH - 4**

**Size: 4"x4"**



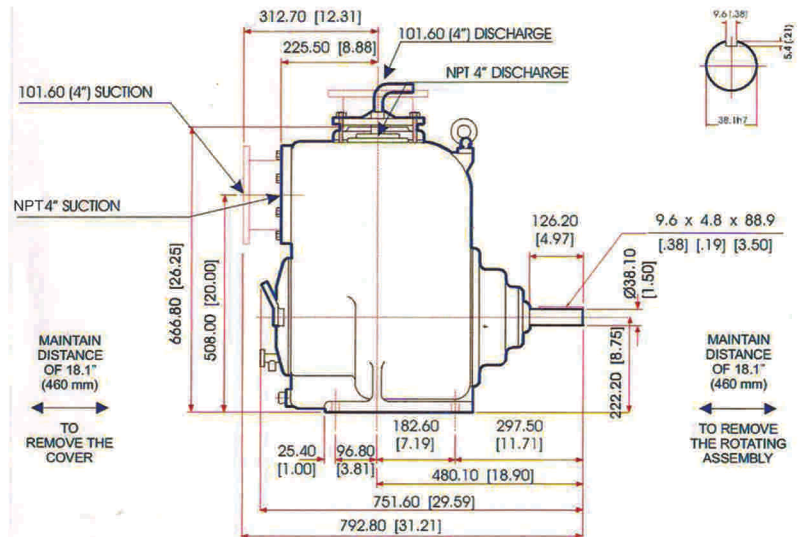
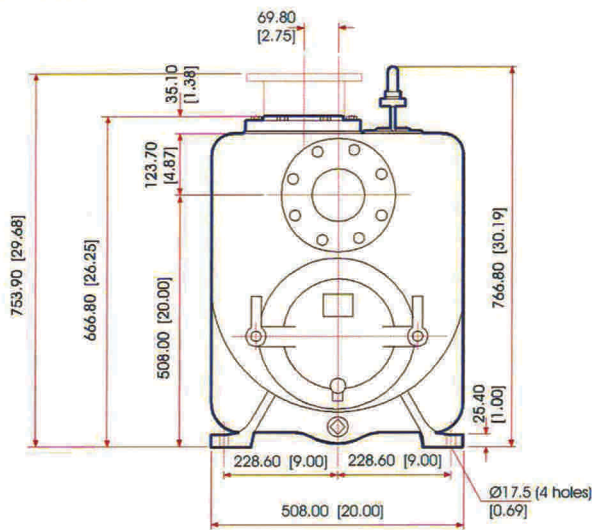
Innovative Engineering



**Seal Detail**

Pump Size: 4"x4" (102mmx102mm)	
Pump Casing	Ductile Iron - ASTM A48
Impeller	Close Type, 5 Vane Material - Cast Steel - ASTM A48 / Bronze / S.S. Pumps upto 28.57 mm Solids
Impeller Shaft	Stress Proof SAE 1144 Steel
Wear Plate	ASTM A48
Wear Rings	ASTM A48
Clean-out / Cover Plate	Removable Type - ASTM A48
Flap Valve	Neoprene
Bearing Housing	Ductile Iron ASTM A48
Seal Plate	Ductile Iron ASTM A48
Shaft Sleeve	Ductile Iron ASTM A48
Radial Bearing	Open Single Ball
Thrust Bearing	Open Double Ball
Bearing / Seal - Cavity Lubrication	SAE No. 30 Lubricating Oil
Flanges	Ductile Iron ASTM A48
Gaskets	Buna-N, Compressed Synthetic Rubber
O-Rings	Buna - N, Compressed Synthetic Rubber
Hardware	Steel Grade 8
Pressure Release Valve	Brass
Oil Level Sight Glass	Bearing and Seal Cavity

## MH - 4 EXTERNAL DIMENSIONS



**Optional Equipment and Materials:** Automatic air release valve, 120V/230V casing heater, Sea-Water Application Materials. High pump temperature shutdown kit, Moisture probe gauge kit, ASTM standard suction and discharge flanges.

**Seal Specifications:**

Mechanical oil-lubricated, double floating, self-aligning seal. Silicon Carbide rotation and stationary faces. Stainless steel metal components. Maximum temperature of liquid pumped 180°F / 83°C.

- All Weights & Dimensions are on approximate basis.