



MERAJ

Self-Priming, Centrifugal Pumps
 Chemical, Petroleum, Water & Fire Fighting

MODEL: MH - 6

Size: 6"x6"



Innovative Engineering



DATA SHEET

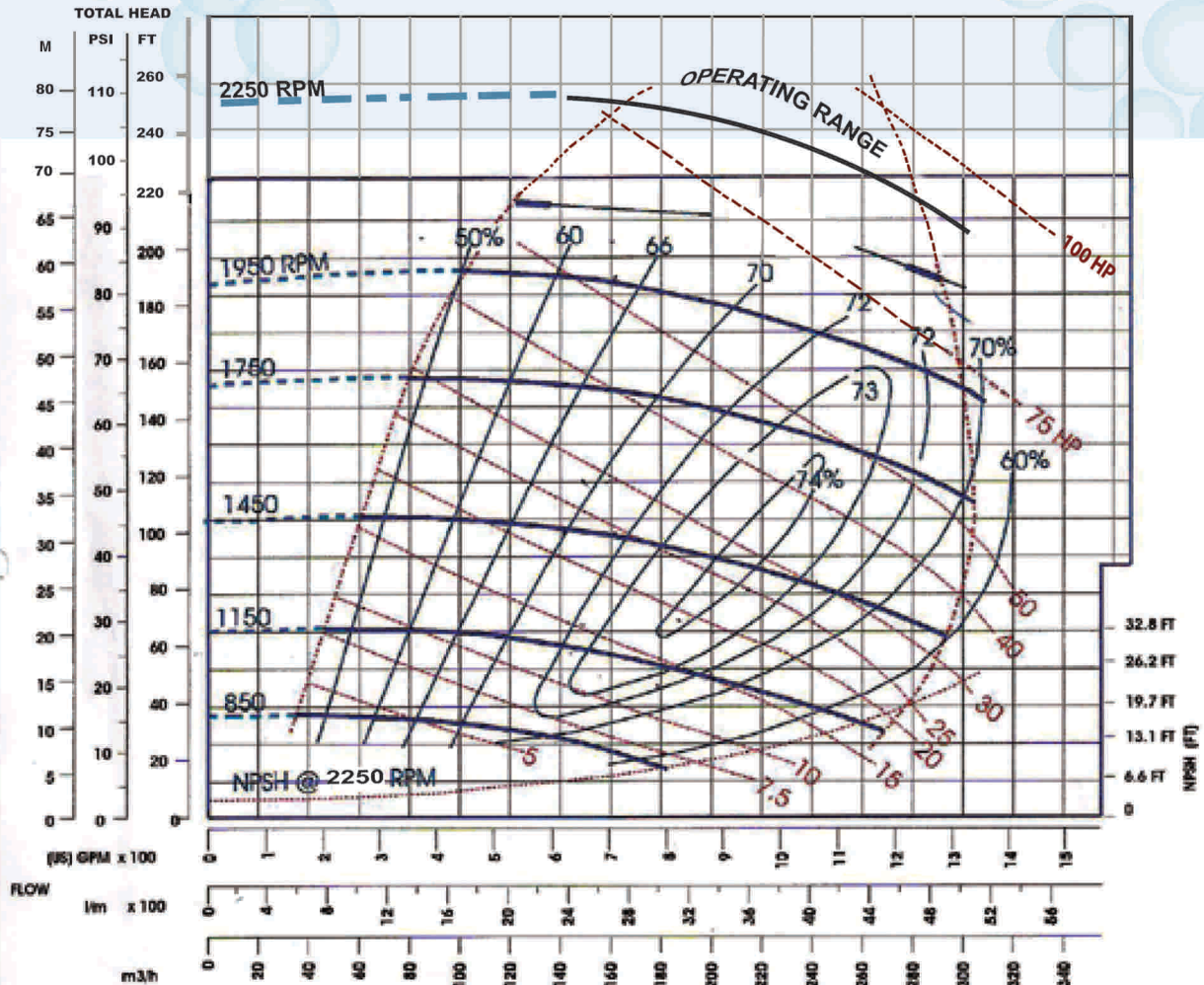
Net Weight: 910 lbs / 413 Kg
 Shipping Weight: 965 lbs / 437 Kg
 Impeller Diameter: 12.5"
 Max. Solid Sphere: Upto 15 mm
 R. P. M: From 850 To 2600

SELF- PRIMING

850 RPM 2.4 M (8 Ft) - 1150 RPM 3.0 M (10 Ft)
 1450 RPM 4.2 M (14 Ft) - 1750 RPM 4.5 M (15 Ft)
 1950 RPM 4.5 M (15 Ft) - 2250 RPM 6 M (20 Ft)

BEFORE USING THIS TABLE, CHECK THE NPSH.

MH - 6 PERFORMANCE CURVE



N.B.: This curve is provided for preliminary selection only. Please consult the factory before making final pump or motor / engine selection.

MERAJ LIMITED

PEC Licence No. 103

Category: C-B

Head Office: Plot # 11, Sector 15, Korangi Industrial Area, Karachi-74900, Pakistan.
 Tel.: 9221-35050145 - 6 Fax: 9221-35060663 E-mail: merajltd@cyber.net.pk Web: www.meraj.net.pk

Middle East & Africa Sales and Services Center: P.O.Box 50227, Hamriyah Free Zone, Sharjah, U.A.E.

E-mail: meraj.limited@gmail.com Sharjah Office :+917502524210 Fax: +97165262130

BRANCH OFFICES: Rawalpindi Lahore Peshawar Multan
 0302-8256060, 0300-8462656, 0333-9103300, 0313-7366877,

FOR APPLICATIONS' DETAILS,
 REFER TO MAIN BROCHURE